



NOTE: IMAGE ABOVE IS FROM COUNTRIES WHERE VEHICLES DRIVE ON THE RSH. FOR IRELAND, THE SR7 RADAR SENSOR IS MOUNTED ON THE POLE AND DETECTS THE REAR/END OF VEHICLES AS THEY PASS ON THE NEAR SIDE.

Features

- 4 Radar antennas scanning the traffic flow
- Automatic calibration of the measuring angle
- Road lane information
- Axle detection to improve the classification accuracy (8+1 vehicle classes)
- For every vehicle speed, length, gap between vehicles, class, number of axles, direction and traffic lane is recorded
- Large internal memory for >1 million vehicles
- Integrated 4G LTE modem for online data access
- Bluetooth can be used for setup of the device and local data transfer
- Android and iOS App in preparation
- GPS positioning to avoid data mix up after surveys and to synchronize time
- Measures the supply voltage
- Deep discharge protection for batteries
- Easy one man installation
- Short set-up time - just a rough alignment is enough, the device calibrates itself automatically!

Highlights

A mobile traffic detection device to the highest quality standards! The SR7 combines easy and quick mounting on the roadside, without the need of any construction work, without stopping the flow of traffic, with highest accuracy level on data detection.

The device calibrates itself automatically to the course of the road, making installation as easy as possible.

The internal radar even detects axles and the axle positions and uses this information for optimized classification of vehicles.

Due to its energy-saving operation the SR7 is able to gather traffic data on roadside for a period of more than 2 weeks continuously.

The collected data can easily be retrieved using any webbrowser on any system from everywhere.

Electrical Data

Input Voltage	12V
Power Consumption:	Low Power Design! < 0.5W (!)

Radar Sensor

Operating Frequency	K-Band (ab 24 GHz)
Transmitting Power	5 mW
Certification	CE approved
Operating Speed	3 ... 199 km/h or 3 .. 150 mph
Accuracy	Speed \pm 3 %

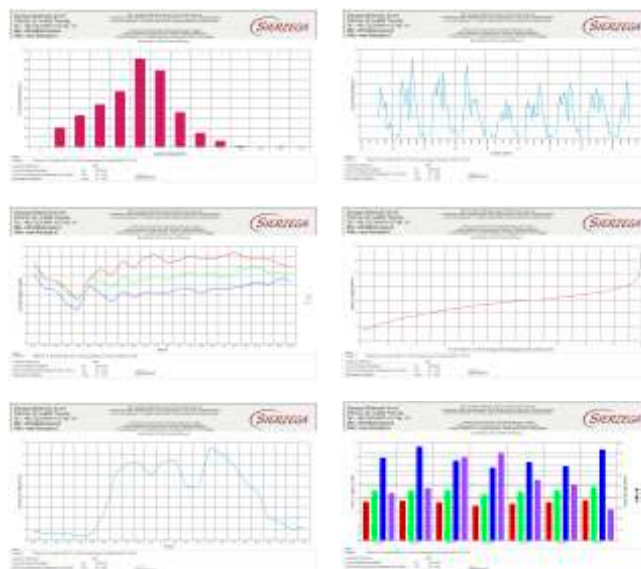
Mechanical Data

Dimensions	30 x 20 x 15 cm
Weight	~ 3 kg without Battery
Enclosure	Glass Fibre reinforced Plastics
Protection Degree	Radar Module IP68
Operating Temperature	-25° to 60°C

Analysing Software SRA

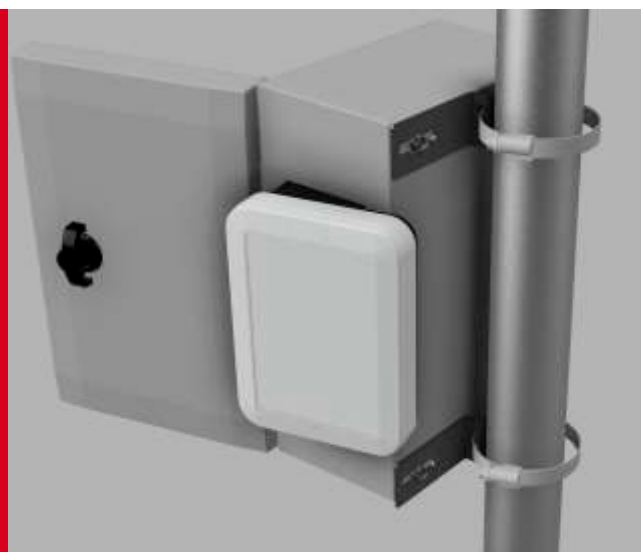


Charts



Scope of Delivery

- Traffic Counter and Classifier SR7
- Analysing Software - SRA
- Pole Brackets (for mounting the SR7 enclosure)
- Battery Cable
- Optional: 12 V / 22 Ah Battery
- Optional: Battery Chargers and Solar Power Supply



© 2024-04 Sierzege Elektronik GmbH. All rights reserved. Specifications included in this datasheet are subject to change without notice.