



PWS

INSTALLATION INSTRUCTIONS

VELOKERB CYCLE LANE SEPARATOR

VeloKerb x 1100mm



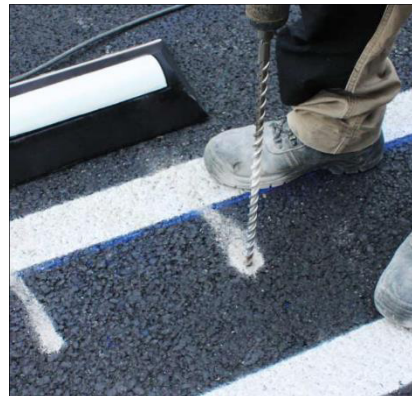
Resin.



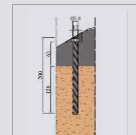
M-12mm. Zinc plated threaded rod and nut. Ref.



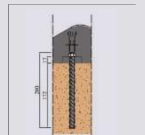
- 1.** Place the separator in the required location.



- 2.** Drill with a $\varnothing 14$ bit to the indicated depth in each one of the fixing holes.



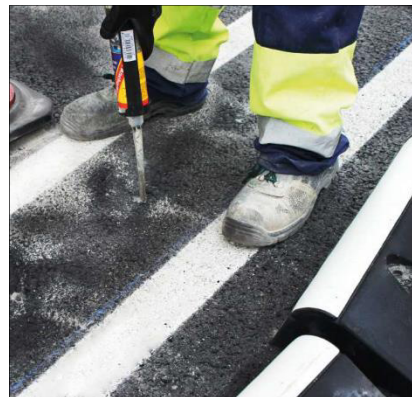
Body separator fixings.



Between separators fixings.



- 3.** Remove the separator and clean the holes of dust & debris.



- 4.** Fill holes approx. 2/3rds with resin.



- 5.** Place the separator with the threaded rods and nuts over the holes and tap Threaded rod down fully into place.



- 6.** Wait until the resin is fully dry and tighten the separator with the nut.



PWS

PWS Signs Ltd

Ravensdale,
Unit 10 Northlink Business Park,
Coes Road, Dundalk, Co. Louth,
A91 WV09
Tel: (042) 937 5010

PWS Ireland Ltd

Greenbank Industrial Estate,
Newry, Co. Down,
BT34 2QX
Tel: (028) 3026 4511

✉ info@pwssigns.com
🌐 www.pwssigns.com