

# Vehicle Activated Signs (VAS)

**VAS provide a bright, highly visible warning to alert drivers about potential hazards ahead. They are proven to reduce vehicle speeds and increase safety for motorists & other road users**

**Solar or Mains Powered with Optional Data Collection**

- Radar Activated
- Loops Activated
- Overheight Vehicle Activated

## Characteristics

- **Aluminium construction** lightweight & strong
- **Ultra Bright Osram LED's**
- **Mounted on single 89mm Dia. steel Pole**
- **Passive Safe to EN12767**
- **Available in all designs** from Chapter 6 of T.S.M.
- **Full range of Supplementary Plates to suit**
- **Solar or Mains Power operation**
- **Adjustable Speed Activation threshold**
- **Automatic brightness adjustment**
- **Data logging option available** with Remote Operation/data transfer
- **Long life reliability** Virtually maintenance free
- **Design and Advice Service**
- **Full installation service available** countrywide

## Details

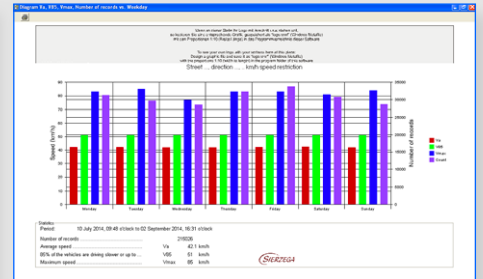
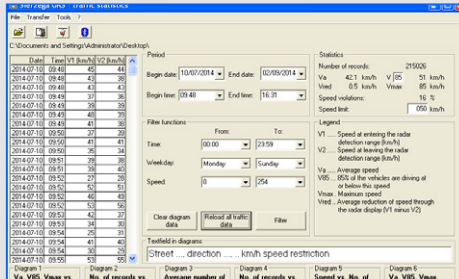
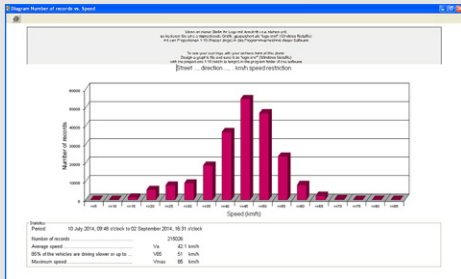
PWS offer a range of Vehicle Activated Signs (VAS) which provide advance warning to motorists about potential hazards ahead - such as Sharp Bends, Junctions, Crossroads, Roundabouts, Pedestrian Crossings etc. The VAS provide a bright and highly visible warning to alert the driver about the potential hazard and are proven to reduce vehicle speeds and increase safety for motorists & other road users.

The in-built radar detects oncoming vehicles and instantly determines their speed - the sign will display if the vehicle is approaching in excess of a pre-determined speed. The signs display a hazard symbol pictogram and supplementary plate text message in Irish & English. When activated, the hazard symbol illuminates while the Amber LED's on the border of the sign flash on and off in sync with the red LED's of the Supplementary Plate.



## Data Collection Option

As an option, PWS can offer a sign activation radar with a Data Collection feature - the radar stores data on all detected vehicles - date, time, V1 speed (speed at initial detection) and V2 speed (speed passing the sign). This data can be analysed software supplied with the sign to provide useful statistics on vehicle counts as well as monitoring the effect the VAS has on reducing vehicle speeds.



## Technical Specifications

### Electrical Data

Input Voltage	12V
Power Consumption - Radar On, LED's Off	<0.1W
Display Active (speed value)	8W
Power System:	Solar

### Radar Sensor

Operating Frequency	K-band (24 GHz)
Transmitting Power	5 mW
Certification	FCC, IC, CE Approved 2 -199 km/h
Detection Speed	2 -199 km/h
Detection Range	min 100m, typ 150m Truck/HGV typ. 300m
Accuracy	+/- 3%

### Mechanical Data

Signs Weight	10 kgs
Mounting Rails	Signfix
Protection Rating	IP66
Operating Temp Range	-25 to 60 degrees c.

### LEDs

Brand  
LED Brightness

### Display

LED Colours  
White  
Amber  
Red

### Sign Size

Diamond Size  
Go Mall/SLOW Plate  
Reading Distance

### Sign Mounting

89mm Pole **Passively Safe to EN12767**

### Data Collection Option

Bluetooth or RC1 Remote Data Unit

**High-Performance Osram  
"Black Series"**  
Automatic

**Hazard Symbol  
Diamond Border  
Supplementary Plate**

**600mm Side Length (750mm  
& 900mm available)  
700mm x 350mm  
approx. 150m**

